

AFGHAN YOUTH FEMALES

MODEL DESCRIPTION DOCUMENT (MDD)

Version 1.0



SEPTEMBER 11, 2015

DOCUMENT NUMBER: 15060909-024-12
CONTRACT NUMBER: W900KK-14-C-0025

PREPARED FOR:

U.S. ARMY PEO STRI
ATTN: KEITH NEILSEN
12423 RESEARCH PARKWAY
ORLANDO, FL 32826-3275



PREPARED BY:

DIGNITAS TECHNOLOGIES, LLC
3504 LAKE LYNDA DR., SUITE 170
ORLANDO, FL 32817

DOCUMENT REVISION HISTORY		
Version	Description	Date
0.1	Draft	01/07/15
1.0	Initial Release	09/11/15

TABLE OF CONTENTS

DOCUMENT REVISION HISTORY i

TABLE OF FIGURES..... iii

TABLE OF TABLES..... iii

1 MODEL OVERVIEW 1

 1.1 DESCRIPTION 1

 1.2 REFERENCES..... 1

 1.3 MODEL VERSION 2

 1.4 MODEL SUMMARY 3

 1.5 LICENSING/RIGHTS..... 5

2 MODEL ATTRIBUTES 5

 2.1 POLYGON ALLOCATION 5

 2.2 LEVEL OF DETAIL (LODS) 5

 2.3 TEXTURE MAPS 6

 2.4 SENSOR VIEWS..... 8

 2.5 HEALTH STATES..... 9

 2.6 SKELETAL STRUCTURE 9

 2.6.1 JOINTS IN THE RIG 9

 2.6.2 ATTACH POINTS AND ATTACHED MODELS 9

3 ANIMATIONS 10

4 VERIFICATION APPROACH..... 10

 4.1 RUNTIME SYSTEMS 10

5 LIMITATIONS 10

6 CONTACT INFORMATION 10

TABLE OF FIGURES

Figure 1 Afghan Youth Female Character Models..... 2

Figure 2 Afghan Youth Female 1 Origin on Cartesian X, Y, Z Coordinate System 3

Figure 3 Afghan Youth Female 2 Origin on Cartesian X, Y, Z Coordinate System 4

Figure 4 Afghan Youth Female 3 Origin on Cartesian X, Y, Z Coordinate System 4

Figure 5 Afghan Youth Female 1 Texture Map 6

Figure 6 Afghan Youth Female 1 Normal Map..... 6

Figure 7 Afghan Youth Female 2 Texture Map 7

Figure 8 Afghan Youth Female 2 Normal Map..... 7

Figure 9 Afghan Youth Female 3 Texture Map 8

Figure 10 Afghan Youth Female 3 Normal Map..... 8

TABLE OF TABLES

Table 1 Character Revision History 2

Table 2 Model Summary..... 3

Table 3 Polygon Allocation..... 5

Table 4 Naming Convention for Joints..... 9

Table 5 Attached Models..... 10

1 MODEL OVERVIEW

1.1 DESCRIPTION

This document details the 3-Dimensional (3D) models of Afghan Youth Female characters. The Afghan Youth Female character models can be used with and without weapons and with a set of animations (see the specific weapons and animations Model Description Documents for more information). Weapons are attached and detached from the Afghan Youth Female character models at specific attach points. During runtime weapons are attached and detached to the model by the visualization system that controls the 3D model. These models can be used with any visualization system that can import FBX or COLLADA formats.

The Afghan Youth Female character models were developed by Dignitas Technologies for the SE Core DT Phase III Small Business Innovative Research (SBIR) project. The models are part of a larger set of character and weapon models, and animations developed to support the LVC-IA AAR 3D Viewer. The models designs were based on screen captures of the CCTT DI Guy Afghan Youth Female models provided by SE Core. To meet the LVC-IA AAR performance requirement, a medium fidelity model was developed.

The Afghan Youth Female character model components include:

- Dress
- Pants
- Flats
- Hijab

1.2 REFERENCES

- 3D_Model_Development_Process.docx
 - The 3D model development process details Dignitas Technologies' procedure for building 3D characters and animations.
- Character_Model_Specification.docx
 - The character model specification provides the requirements for developing 3D character models and attachments.



Afghan Youth Female 1

Afghan Youth Female 2

Afghan Youth Female 3

Figure 1 Afghan Youth Female Character Models

1.3 MODEL VERSION

Information about the model version can be found in the “Model_Version.txt” file located in the model’s directory (same directory the model’s .fbx file is located).

Table 1 Character Revision History

Version	Description	Date
1.0	Initial release of the AfghanYouthFemale1_skelmesh.fbx	09/11/15
1.0	Initial release of the AfghanYouthFemale2_skelmesh.fbx	09/11/15
1.0	Initial release of the AfghanYouthFemale3_skelmesh.fbx	09/11/15

1.4 MODEL SUMMARY

Table 2 Model Summary

Model Name	AfghanYouthFemale1_skelmesh.fbx AfghanYouthFemale2_skelmesh.fbx AfghanYouthFemale3_skelmesh.fbx
SE Core MEL Version L ID	860
Model Units	Meters
Model Height	1.73 Meters (units) or 173 Centimeters
Coordinate System	Cartesian X, Y, Z (see Figure 2 below)
Model Origin	Origin is located on the ground between the character's feet. (0, 0, 0) (See figures 2-4 below)
Model Orientation Runtime	Forward: Positive Y Up: Positive Z
Model Orientation Maya	Forward: Negative Z Up: Positive Y



Afghan Youth Female 1

Figure 2 Afghan Youth Female 1 Origin on Cartesian X, Y, Z Coordinate System



Afghan Youth Female 2

Figure 3 Afghan Youth Female 2 Origin on Cartesian X, Y, Z Coordinate System



Afghan Youth Female 3

Figure 4 Afghan Youth Female 3 Origin on Cartesian X, Y, Z Coordinate System

1.5 LICENSING/RIGHTS

Models built by Dignitas Technologies along with all files and documentation, have full Government Purpose Rights.

2 MODEL ATTRIBUTES

2.1 POLYGON ALLOCATION

Polygon allocation is the number of triangles and vertices for a given state and Level of Detail (LODs) in the model. The method for calculating the number of polygons is to gather each model state then count the polygons present in each representation. Animations are not included in the polygon allocation. The Afghan Youth Female (unarmed) character models have a single LOD which is labeled LOD0.

Table 3 Polygon Allocation

Model	# of Triangles	# of Vertices
Afghan Youth Female 1	3036	1552
Afghan Youth Female 2	3036	1552
Afghan Youth Female 3	3260	1692

2.2 LEVEL OF DETAIL (LODS)

Dignitas supports only one LOD (LOD0) and no switch distances at this time.

2.3 TEXTURE MAPS

Textures:

- AfghanYouthFemale1_COL.dds (Diffuse) 2048 x 2048 pixels
- Texture Version: 1.0



Figure 5 Afghan Youth Female 1 Texture Map

- AfghanYouthFemale1_NRML.dds (Normal map) 2048 x 2048 pixels
- Texture Version: 1.0



Figure 6 Afghan Youth Female 1 Normal Map

- AfghanYouthFemale2_COL.dds (Diffuse) 2048 x 2048 pixels
- Texture Version: 1.0

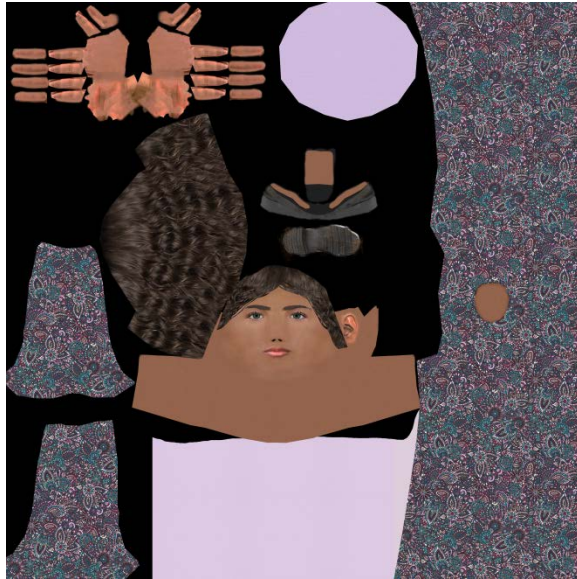


Figure 7 Afghan Youth Female 2 Texture Map

- AfghanYouthFemale2_NRML.dds (Normal map) 2048 x 2048 pixels
- Texture Version: 1.0



Figure 8 Afghan Youth Female 2 Normal Map

- AfghanYouthFemale3_COL.dds (Diffuse) 2048 x 2048 pixels
- Texture Version: 1.0

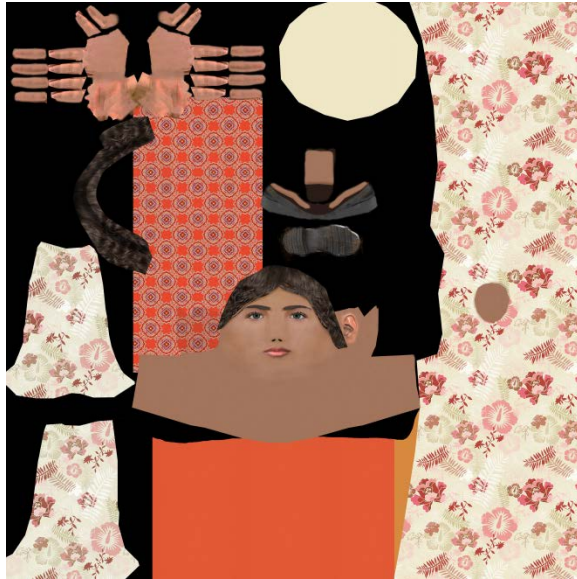


Figure 9 Afghan Youth Female 3 Texture Map

- AfghanYouthFemale3_NRML.dds (Normal map) 2048 x 2048 pixels
- Texture Version: 1.0



Figure 10 Afghan Youth Female 3 Normal Map

2.4 SENSOR VIEWS

Not applicable at this time.

2.5 HEALTH STATES

For more information on the Incapacitated and Killed States refer to their respective MDDs.

Healthy State

Incapacitated State

Killed State

2.6 SKELETAL STRUCTURE

2.6.1 JOINTS IN THE RIG

A **rig** is a skeleton that attaches to the 3D model to allow for animations to be added. The **joints** in the rig hold the translation and rotational data from the animations.

Naming convention for joints:

Table 4 Naming Convention for Joints

Hips	RightForeArm
Spine	RightHand
Spine1	RightThumbBase
Neck	RightThumbTip
Head	RightHandTip
HeadEnd	LeftUpLeg
LeftShoulder	LeftLeg
LeftArm	LeftFoot
LeftForeArm	LeftToeBase
LeftHand	LeftToe
LeftThumbBase	RightUpLeg
LeftThumbTip	RightLeg
LeftHandTip	RightFoot
RightShoulder	RightToeBase
RightArm	RightToe

2.6.2 ATTACH POINTS AND ATTACHED MODELS

The model rig and the **Attach Model** (e.g. weapons, cell phones, etc) both have **Attach Points** where they can be connected (“attached”) during runtime. **Attach Points** are unweighted joints on the model rig that represent locations where **Attach Models** can be connected. Attachments occur during runtime based on the animation applied to the model rig. Table 5 lists all Attach Points, associated Attach Models, and corresponding animations for this character model.

Table 5 Attached Models

Name of Attached Model	Animations	Attach Points
N/A	N/A	N/A

3 ANIMATIONS

The animations associated with this character are shown below. For additional animations compatible with this character, or more information on those listed above, please refer to the Animation MDDs.

- Walking
- Running
- Crawling
- Standing
- Kneeling
- Prone
- Incapacitated
- Crouching
- Killed

4 VERIFICATION APPROACH

4.1 RUNTIME SYSTEMS

This 3D model, associated accessories and weapons, and animations were tested using the following:

- Veritas 3D Viewer v1.13
- Veritas Model Viewer v1.4
- FBX Viewer 2013.3
- OneSAF v8.0

5 LIMITATIONS

Killed state is not implemented yet, however, it is under development.

6 CONTACT INFORMATION

Project Manager: Greg Dukstein

Phone: (407) 601-7847

Email: gdukstein@dignitastech.com