

AFGHAN TEEN MALES

MODEL DESCRIPTION DOCUMENT (MDD)

Version 1.0



OCTOBER 3, 2014

DOCUMENT NUMBER: 15060909-024-11
CONTRACT NUMBER: W900KK-14-C-0025

PREPARED FOR:

U.S. ARMY PEO STRI
ATTN: KEITH NEILSEN
12423 RESEARCH PARKWAY
ORLANDO, FL 32826-3275



PREPARED BY:

DIGNITAS TECHNOLOGIES, LLC
3504 LAKE LYNDA DR., SUITE 170
ORLANDO, FL 32817

DOCUMENT REVISION HISTORY		
Version	Description	Date
0.1	Draft	01/07/15
1.0	Initial Release	09/11/15

TABLE OF CONTENTS

DOCUMENT REVISION HISTORY i

TABLE OF FIGURES iii

TABLE OF TABLES iii

1 MODEL OVERVIEW 1

 1.1 DESCRIPTION 1

 1.2 REFERENCES 1

 1.3 MODEL VERSION 3

 1.4 MODEL REVISION HISTORY **Error! Bookmark not defined.**

 1.5 MODEL SUMMARY 3

 1.6 LICENSING/RIGHTS 7

2 MODEL ATTRIBUTES 7

 2.1 POLYGON ALLOCATION 7

 2.2 LEVEL OF DETAIL (LODS) 7

 2.3 TEXTURE MAPS 8

 2.4 SENSOR VIEWS 14

 2.5 HEALTH STATES 14

 2.6 SKELETAL STRUCTURE 14

 2.6.1 JOINTS IN THE RIG 14

 2.6.2 ATTACH POINTS AND ATTACHED MODELS **Error! Bookmark not defined.**

3 ANIMATIONS 15

4 VERIFICATION APPROACH 15

 4.1 RUNTIME SYSTEMS 15

5 LIMITATIONS 15

6 CONTACT INFORMATION 16

TABLE OF FIGURES

Figure 1 Afghan Teen Male Character Models 2

Figure 2 Afghan Teen Male with Bomb Vests Character Models..... 2

Figure 3 Afghan Teen Male 1 Origin on Cartesian X, Y, Z Coordinate System 4

Figure 4 Afghan Teen Male 2 Origin on Cartesian X, Y, Z Coordinate System 5

Figure 5 Afghan Teen Male 3 Origin on Cartesian X, Y, Z Coordinate System 6

Figure 6 Afghan Teen Male 1 Texture Map 8

Figure 7 Afghan Teen Male 1 Normal Map..... 8

Figure 8 Afghan Teen Male 2 Texture Map 9

Figure 9 Afghan Teen Male 2 Normal Map..... 9

Figure 10 Afghan Teen Male 3 Texture Map 10

Figure 11 Afghan Teen Male 3 Normal Map..... 10

Figure 12 Afghan Teen Male 1 with Bomb Vest Texture Map 11

Figure 13 Afghan Teen Male 1 with Bomb Vest Normal Map 11

Figure 14 Afghan Teen Male 2 with Bomb Vest Texture Map 12

Figure 15 Afghan Teen Male 2 with Bomb Vest Normal Map 12

Figure 16 Afghan Teen Male 3 with Bomb Vest Texture Map 13

Figure 17 Afghan Teen Male 3 with Bomb Vest Normal Map 13

TABLE OF TABLES

Table 1 Character Revision History 3

Table 2 Model Summary..... 3

Table 3 Polygon Allocation..... 7

Table 4 Naming Convention for Joints..... 14

Table 5 Attached Models..... 14

1 MODEL OVERVIEW

1.1 DESCRIPTION

This document details the 3-Dimensional (3D) models of Afghan Teen Male characters. The Afghan Teen Male character models can be used with and without weapons and with a set of animations (see the specific weapons and animations Model Description Documents for more information). Weapons are attached and detached from the Afghan Teen Male character models at specific attach points. During runtime weapons are attached and detached to the model by the visualization system that controls the 3D model. These models can be used with any visualization system that can import FBX or COLLADA formats.

The Afghan Teen Male character models were developed by Dignitas Technologies for the SE Core DT Phase III Small Business Innovative Research (SBIR) project. The models were part of a larger set of character and weapon models, and animations developed to support the LVC-IA AAR 3D Viewer. The models designs were based on screen captures of the CCTT DI Guy Afghan Teen Male models provided by SE Core. To meet the LVC-IA AAR performance requirement, a medium fidelity model was developed.

The Afghan Teen Male character model components include:

- Tunic
- Loafers
- Pants
- Hat
- Scarf

1.2 REFERENCES

- 3D_Model_Development_Process.docx
 - The 3D model development process details Dignitas Technologies' procedure for building 3D characters and animations.
- Character_Model_Specification.docx
 - The character model specification provides the requirements for developing 3D character models and attachments.



Afghan Teen Male 1



Afghan Teen Male 2



Afghan Teen Male 3

Figure 1 Afghan Teen Male Character Models



Afghan Teen Male 1



Afghan Teen Male 2



Afghan Teen Male 3

Figure 2 Afghan Teen Male with Bomb Vests Character Models

1.3 MODEL VERSION AND HISTORY

Information about the model version can be found in the “Model_Version.txt” file located in the model’s directory (same directory the model’s .fbx file is located).

Table 1 Character Revision History

Version	Description	Date
1.0	Initial release of the AfghanTeen Male1_skelmesh.fbx	10/03/14
1.0	Initial release of the AfghanTeen Male1_WithBombVest_skelmesh.fbx	10/03/14
1.0	Initial release of the AfghanTeen Male2_skelmesh.fbx	10/03/14
1.0	Initial release of the AfghanTeen Male2_WithBombVest_skelmesh.fbx	10/03/14
1.0	Initial release of the AfghanTeen Male3_skelmesh.fbx	10/03/14
1.0	Initial release of the AfghanTeen Male3_WithBombVest_skelmesh.fbx	10/03/14

1.4 MODEL SUMMARY

Table 2 Model Summary

Model Name	AfghanTeenMale1_skelmesh.fbx AfghanTeenMale1_WithBombVest_skelmesh.fbx AfghanTeenMale2_skelmesh.fbx AfghanTeenMale2_WithBombVest_skelmesh.fbx AfghanTeenMale3_skelmesh.fbx AfghanTeenMale3_WithBombVest_skelmesh.fbx AfghanTeenMale4_skelmesh.fbx AfghanTeenMale4_WithBombVest_skelmesh.fbx
SE Core MEL Version L ID Afghan Teen Male	912
SE Core MEL Version L ID Afghan Teen Male with Bomb Vest	864
Model Units	Meters
Model Height	1.6 Meters (units) or 160 Centimeters
Coordinate System	Cartesian X, Y, Z (see Figures 3-5 below)
Model Origin	Origin is located on the ground between the character’s feet. (0, 0, 0) (See figures 3-5 below)
Model Orientation Runtime	Forward: Positive Y Up: Positive Z
Model Orientation Maya	Forward: Positive Z Up: Positive Y



Afghan Teen Male 1



Afghan Teen Male 1 with Bomb Vest

Figure 3 Afghan Teen Male 1 Origin on Cartesian X, Y, Z Coordinate System



Afghan Teen Male 2



Afghan Teen Male 2 with Bomb Vest

Figure 4 Afghan Teen Male 2 Origin on Cartesian X, Y, Z Coordinate System



Afghan Teen Male 3



Afghan Teen Male 3 with Bomb Vest

Figure 5 Afghan Teen Male 3 Origin on Cartesian X, Y, Z Coordinate System

1.5 LICENSING/RIGHTS

Models built by Dignitas Technologies along with all files and documentation, have full Government Purpose Rights.

2 MODEL ATTRIBUTES

2.1 POLYGON ALLOCATION

Polygon allocation is the number of triangles and vertices for a given state and Level of Detail (LODs) in the model. The method for calculating the number of polygons is to gather each model state then count the polygons present in each representation. Animations are not included in the polygon allocation. The Afghan Teen Male character models have a single LOD which is labeled LOD0.

Table 3 Polygon Allocation

Model	# of Triangles	# of Vertices
Afghan Teen Male 1	3178	1591
Afghan Teen Male 1 Bomb Vest	3178	1591
Afghan Teen Male 2	3178	1591
Afghan Teen Male 2 Bomb Vest	3178	1591
Afghan Teen Male 3	3178	1591
Afghan Teen Male 3 Bomb Vest	3178	1591

2.2 LEVEL OF DETAIL (LODS)

Dignitas supports only one LOD (LOD0) and no switch distances at this time.

2.3 TEXTURE MAPS

Textures:

- AfghanTeenMale1_COL.dds (Diffuse) 2048 x 2048 pixels
- Texture Version: 1.0



Figure 6 Afghan Teen Male 1 Texture Map

- AfghanTeenMale1_NRML.dds (Normal map) 2048 x 2048 pixels
- Texture Version: 1.0



Figure 7 Afghan Teen Male 1 Normal Map

- AfghanTeenMale2_COL.dds (Diffuse) 2048 x 2048 pixels
- Texture Version: 1.0



Figure 8 Afghan Teen Male 2 Texture Map

- AfghanTeenMale2_NRML.dds (Normal map) 2048 x 2048 pixels
- Texture Version: 1.0

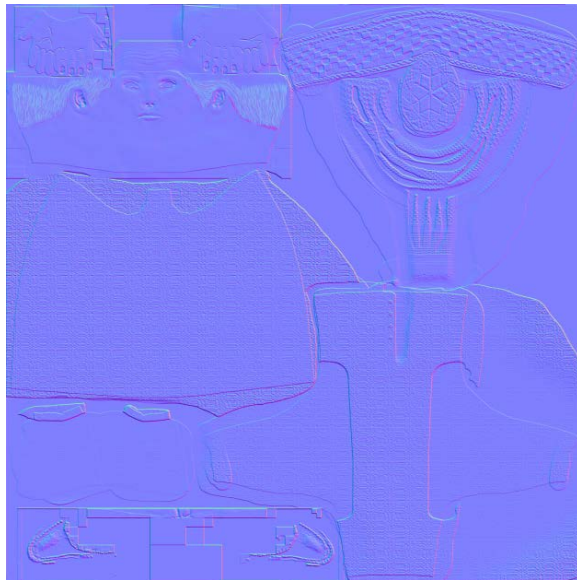


Figure 9 Afghan Teen Male 2 Normal Map

- AfghanTeenMale3_COL.dds (Diffuse) 2048 x 2048 pixels
- Texture Version: 1.0

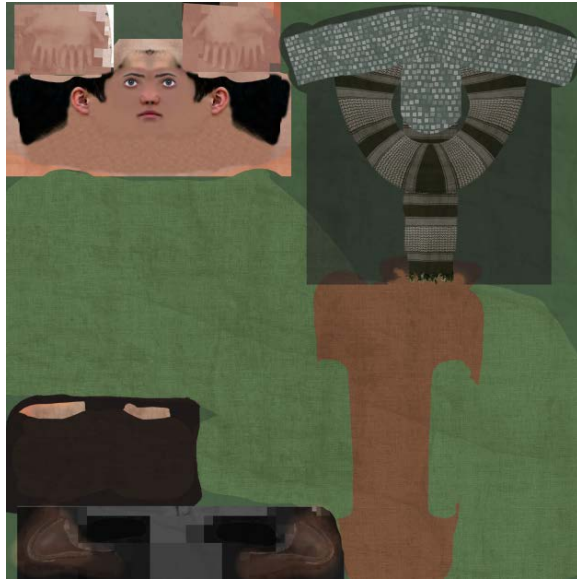


Figure 10 Afghan Teen Male 3 Texture Map

- AfghanTeenMale3_NRML.dds (Normal map) 2048 x 2048 pixels
- Texture Version: 1.0



Figure 11 Afghan Teen Male 3 Normal Map

- AfghanTeenMale1_WithBombVest_COL.dds (Diffuse) 2048 x 2048 pixels
- Texture Version: 1.0



Figure 12 Afghan Teen Male 1 with Bomb Vest Texture Map

- AfghanTeenMale1_WithBombVest_NRML.dds (Normal map) 2048 x 2048 pixels
- Texture Version: 1.0



Figure 13 Afghan Teen Male 1 with Bomb Vest Normal Map

- AfghanTeenMale2_WithBombVest_COL.dds (Diffuse) 2048 x 2048 pixels
- Texture Version: 1.0



Figure 14 Afghan Teen Male 2 with Bomb Vest Texture Map

- AfghanTeenMale2_WithBombVest_NRML.dds (Normal map) 2048 x 2048 pixels
- Texture Version: 1.0



Figure 15 Afghan Teen Male 2 with Bomb Vest Normal Map

- AfghanTeenMale3_WithBombVest_COL.dds (Diffuse) 2048 x 2048 pixels
- Texture Version: 1.0

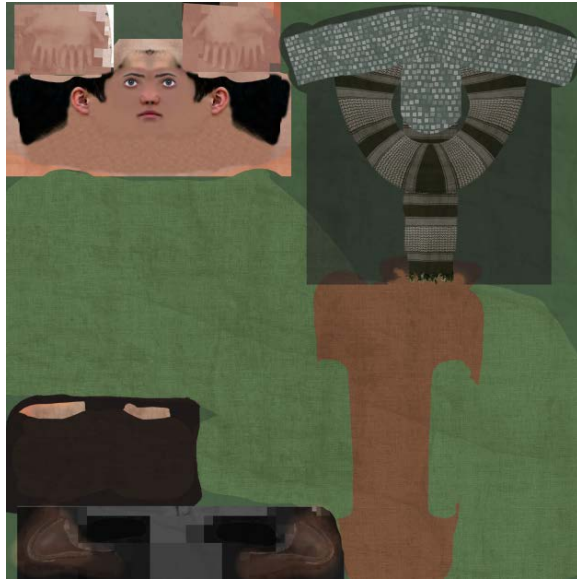


Figure 16 Afghan Teen Male 3 with Bomb Vest Texture Map

- AfghanTeenMale3_WithBombVest_NRML.dds (Normal map) 2048 x 2048 pixels
- Texture Version: 1.0



Figure 17 Afghan Teen Male 3 with Bomb Vest Normal Map

2.4 SENSOR VIEWS

Not applicable at this time.

2.5 HEALTH STATES

For more information on the Incapacitated and Killed States refer to their respective MDDs.

Healthy State

Incapacitated State

Killed State

2.6 SKELETAL STRUCTURE

2.6.1 JOINTS IN THE RIG

A **rig** is a skeleton that attaches to the 3D model to allow for animations to be added. The **joints** in the rig hold the translation and rotational data from the animations.

Naming convention for joints:

Table 4 Naming Convention for Joints

Hips	RightForeArm
Spine	RightHand
Spine1	RightThumbBase
Neck	RightThumbTip
Head	RightHandTip
HeadEnd	LeftUpLeg
LeftShoulder	LeftLeg
LeftArm	LeftFoot
LeftForeArm	LeftToeBase
LeftHand	LeftToe
LeftThumbBase	RightUpLeg
LeftThumbTip	RightLeg
LeftHandTip	RightFoot
RightShoulder	RightToeBase
RightArm	RightToe

2.6.2 ATTACH POINTS AND ATTACH MODELS

The model rig and the **Attach Model** (e.g. weapons, cell phones, etc) both have **Attach Points** where they can be connected (“attached”) during runtime. **Attach Points** are unweighted joints on the model rig that represent locations where **Attach Models** can be connected. Attachments occur during runtime

based on the animation applied to the model rig. Table 5 lists all Attach Points, associated Attach Models, and corresponding animations for this character model.

Table 5 Attached Models

Name of Attached Model	Animations	Attach Points
N/A	N/A	N/A

3 ANIMATIONS

The animations associated with this character are shown below. For additional animations compatible with this character, or more information on those listed above, please refer to the Animation MDDs.

- Walking
- Running
- Crawling
- Standing
- Kneeling
- Prone
- Incapacitated
- Crouching
- Killed

4 VERIFICATION APPROACH

4.1 RUNTIME SYSTEMS

This 3D model, associated accessories and weapons, and animations were tested using the following:

- Veritas 3D Viewer v1.13
- Veritas Model Viewer v1.4
- FBX Viewer 2013.3
- OneSAF v8.0

5 LIMITATIONS

Killed state is not implemented yet, however, it is under development.

6 CONTACT INFORMATION

Project Manager: Greg Dukstein

Phone: (407) 601-7847

Email: gdukstein@dignitastech.com